



**India Meteorological Department  
(Ministry of Earth Sciences)**

**NATIONAL BULLETIN NO. 6 (BoB/04/2025)**

**TIME OF ISSUE: 0930 HOURS IST**

**DATED: 26.07.2025**

**FROM: INDIA METEOROLOGICAL DEPARTMENT (FAX NO. 24643965/24699216/24623220)**

**TO: CONTROL ROOM, NDM, MINISTRY OF HOME AFFAIRS (FAX.NO. 23093750)**

**CONTROL ROOM NDMA (FAX.NO. 26701729)**

**CABINET SECRETARIAT (FAX.NO.23012284, 23018638)**

**PS TO HON'BLE MINISTER FOR S & T AND EARTH SCIENCES (FAX NO.23316745)**

**SECRETARY, MOES (FAX NO. 24629777)**

**H.Q. (INTEGRATED DEFENCE STAFF AND CDS) (FAX NO. 23005137/23005147)**

**DIRECTOR GENERAL, DOORDARSHAN (23385843)**

**DIRECTOR GENERAL, AIR (23421105, 23421219)**

**PIB MOES (FAX NO. 23389042)**

**UNI (FAX NO. 23355841)**

**D.G. NATIONAL DISASTER RESPONSE FORCE (NDRF) (FAX NO. 26105912, 2436 3260)**

**DIRECTOR, PUNCTUALITY, INDIAN RAILWAYS (FAX NO. 23388503)**

**CHIEF SECRETARY, ODISHA (FAX NO. 0674-2536660)**

**CHIEF SECRETARY, WEST BENGAL (FAX NO. 033-22144328)**

**CHIEF SECRETARY, GOVT. OF BIHAR (FAX NO. 0612-2217085)**

**CHIEF SECRETARY, GOVT. OF JHARKHAND (FAX NO. 0651-2400255)**

**CHIEF SECRETARY, GOVT. OF CHHATTISGARH (FAX NO. 0771-2221206)**

**CHIEF SECRETARY, GOVT. OF MADHYA PRADESH (FAX NO. 0755-2551521)**

**CHIEF SECRETARY, GOVT. OF UTTAR PRADESH (FAX NO. 0522-2239283)**

**CHIEF SECRETARY, GOVT. OF MAHARASHTRA (FAX NO. 022-22028594)**

**CHIEF SECRETARY, GOVT. OF RAJASTHAN (FAX NO. 0141-2227114)**

**CHIEF SECRETARY, GOVT. OF GUJARAT (FAX NO. 079-23250305)**

**Subject: Depression over Jharkhand and neighbourhood**

The Depression over Gangetic West Bengal and adjoining Jharkhand moved west-northwestwards with a speed of 25 kmph during past 6 hours and lay centred at 0530 hrs IST of today, the 26<sup>th</sup> July over Jharkhand and neighbourhood, near Lat. 23.4°N and Long. 85.2°E, about 20 km northwest of Ranchi (Jharkhand), 120 km west-northwest of Jamshedpur (Jharkhand), 120 km east-northeast of Jashpurnagar (Chhattisgarh) and 200 km east of Ambikapur (Chhattisgarh).

It is very likely to continue to move west-northwestwards across Jharkhand, & adjoining north Chhattisgarh and northeast Madhya Pradesh & adjoining southeast Uttar Pradesh during next 36 hours.

**Warnings:**

**(i) Rainfall Warning:**

**Jharkhand:** Light to moderate rainfall at most places with **heavy to very heavy rainfall** at a few on 26<sup>th</sup> and 27<sup>th</sup> July and **heavy rainfall** at isolated places on 28<sup>th</sup> July.

**Chhattisgarh:** Light to moderate rainfall at most places with **heavy to very heavy rainfall** at a few places over Chhattisgarh and **extremely heavy rainfall ( $\geq 21$  cm)** at isolated places over Chhattisgarh is very likely on 26<sup>th</sup> & 27<sup>th</sup> July. **Heavy to very heavy rainfall** at isolated places is likely on 28<sup>th</sup> July.

**East Madhya Pradesh:** Light to moderate rainfall at most places with **heavy to very heavy rainfall** at isolated places is very likely during 26<sup>th</sup> – 28<sup>th</sup> July with **extremely heavy rainfall ( $\geq 21$  cm)** on 26<sup>th</sup> July.

**West Madhya Pradesh:** Light to moderate rainfall at most places with **heavy to very heavy rainfall** at isolated places is very likely during 26<sup>th</sup> – 28<sup>th</sup> July with **extremely heavy rainfall ( $\geq 21$  cm)** on 26<sup>th</sup> & 27<sup>th</sup> July.

**Odisha:** Light to moderate rainfall at most places with **heavy to very heavy rainfall** at a few places is very likely on 26<sup>th</sup> July. **Heavy to very heavy rainfall** at isolated places is likely during 26<sup>th</sup>-28<sup>th</sup> July.

**Vidarbha:** Light to moderate rainfall at most places with **heavy to very heavy rainfall** at a few places and **extremely heavy rainfall ( $\geq 21$  cm)** is very likely at isolated places on 26<sup>th</sup> July and **heavy rainfall** at isolated places on 27<sup>th</sup> July.

**Gujarat region:** Light to moderate rainfall at most places with **heavy to very heavy rainfall** at isolated places is very likely on 26 and 27<sup>th</sup> July.

**Gangetic West Bengal:** Light to moderate rainfall at most places with **heavy** at a few places is likely on 26<sup>th</sup> July.

**East Rajasthan:** Light to moderate rainfall at most places with **heavy to very heavy rainfall** at a few places and **extremely heavy rainfall ( $\geq 21$  cm)** is very likely at isolated places on 26<sup>th</sup> and 27<sup>th</sup> July and **heavy rainfall** at isolated places on 27<sup>th</sup> July

**East Uttar Pradesh:** Light to moderate rainfall at many places with **heavy rainfall** at isolated places is very likely on 26<sup>th</sup> July.

**(ii) Wind Warning:**

Squally wind speed reaching 30-40 kmph gusting to 50 kmph is likely to prevail over Jharkhand, Chhattisgarh, north Madhya Pradesh and southeast Uttar Pradesh during next 24 hours.

**(ii) Impact Expected and Action Suggested due to heavy rainfall (Jharkhand, Chhattisgarh, Madhya Pradesh, Vidarbha, Odisha & Gangetic West Bengal) and squally winds (Jharkhand, Chhattisgarh, Madhya Pradesh & southeast Uttar Pradesh )**

**Impact expected:**

- ❖ Breaking of tree branches, uprooting of small trees like banana, papaya, drum sticks. Strong wind and rain may damage plantation, horticulture and standing crops.
- ❖ Partial damage to vulnerable structures due to strong winds and rain.
- ❖ Minor damage to kutcha houses/walls, huts and roads due to heavy rain.
- ❖ Road and rail traffic may be affected due to heavy rain and squally winds.
- ❖ There could be localised landslides, mudslides, landslips, water logging, inundation and flooding over low lying areas.
- ❖ Occasional reduction in visibility due to heavy rainfall.
- ❖ Helicopter services may get affected.

**Action suggested:**

- ❖ People are advised to keep a watch on the weather for worsening conditions and be ready to move to safer places accordingly.
- ❖ Take safe shelters; do not take shelter under trees, as there could be lightning.
- ❖ In case of expected lightning, unplug electrical/ electronic appliances, immediately, get out of water bodies and keep away from all the objects that conduct electricity.

- ❖ Tourism and recreational activities to be regulated.
- ❖ Helicopter services to be regulated.

**Next bulletin will be issued at 1130 hours IST of today, the 26<sup>th</sup> July, 2025.**

**(Dr D R Pattanaik)**  
**Scientist G & Head RSMC**  
**IMD New Delhi**

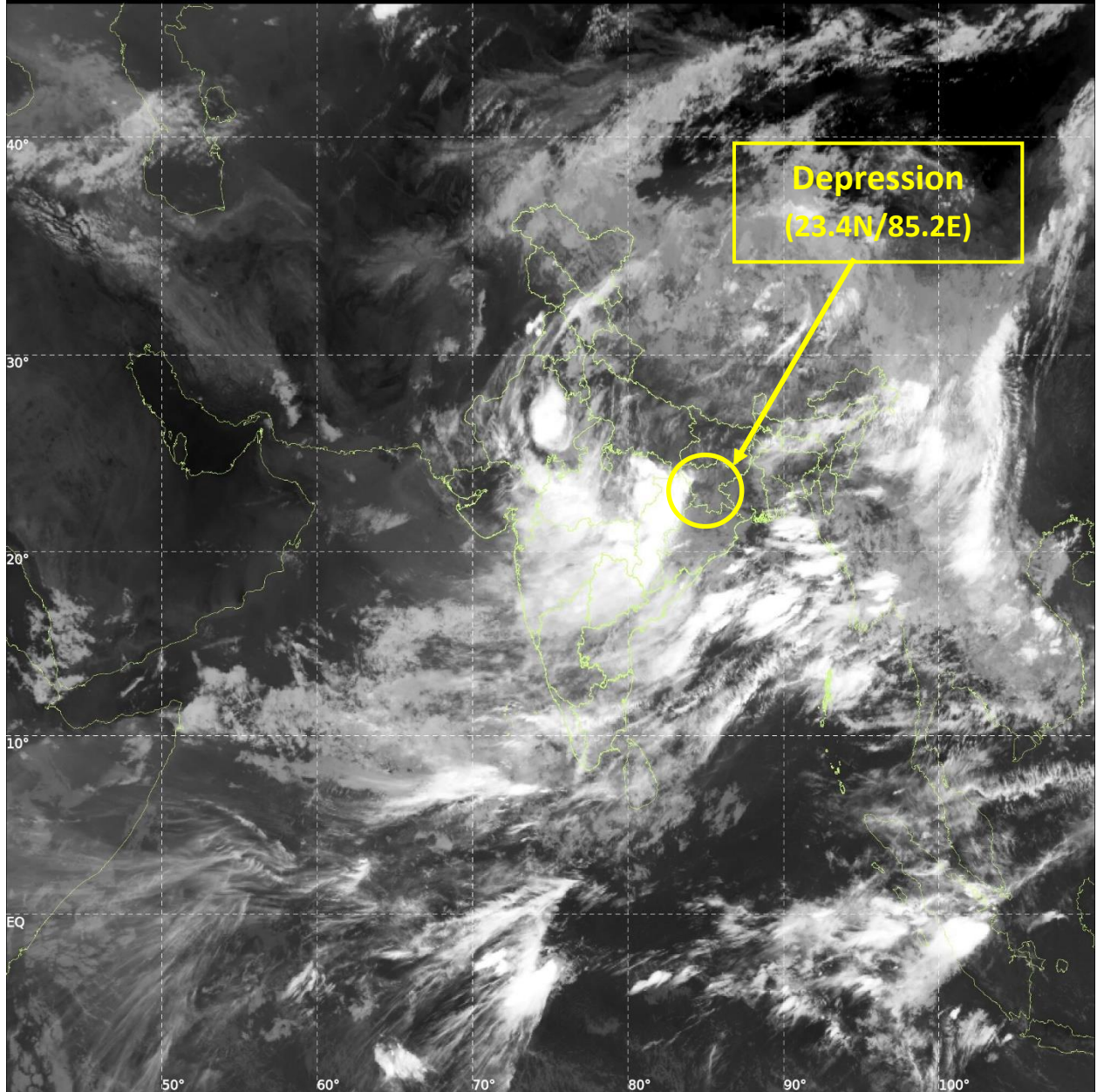
*Copy to: ACWC Kolkata /CWC Bhubaneswar/CWC Vishakhapatnam/Meteorological Centres- Ranchi, Raipur, Patna, Bhopal, Lucknow, Jaipur, Mumbai, Nagpur*



INSAT-3DS IMG, Thermal Infrared1 Count @ 10.83  $\mu\text{m}$   
GMT:26-07-2025/(0200-0227) IST:26-07-2025/(0730-0757)  
L1C MERCATOR (LINEAR STRETCH: 1%)

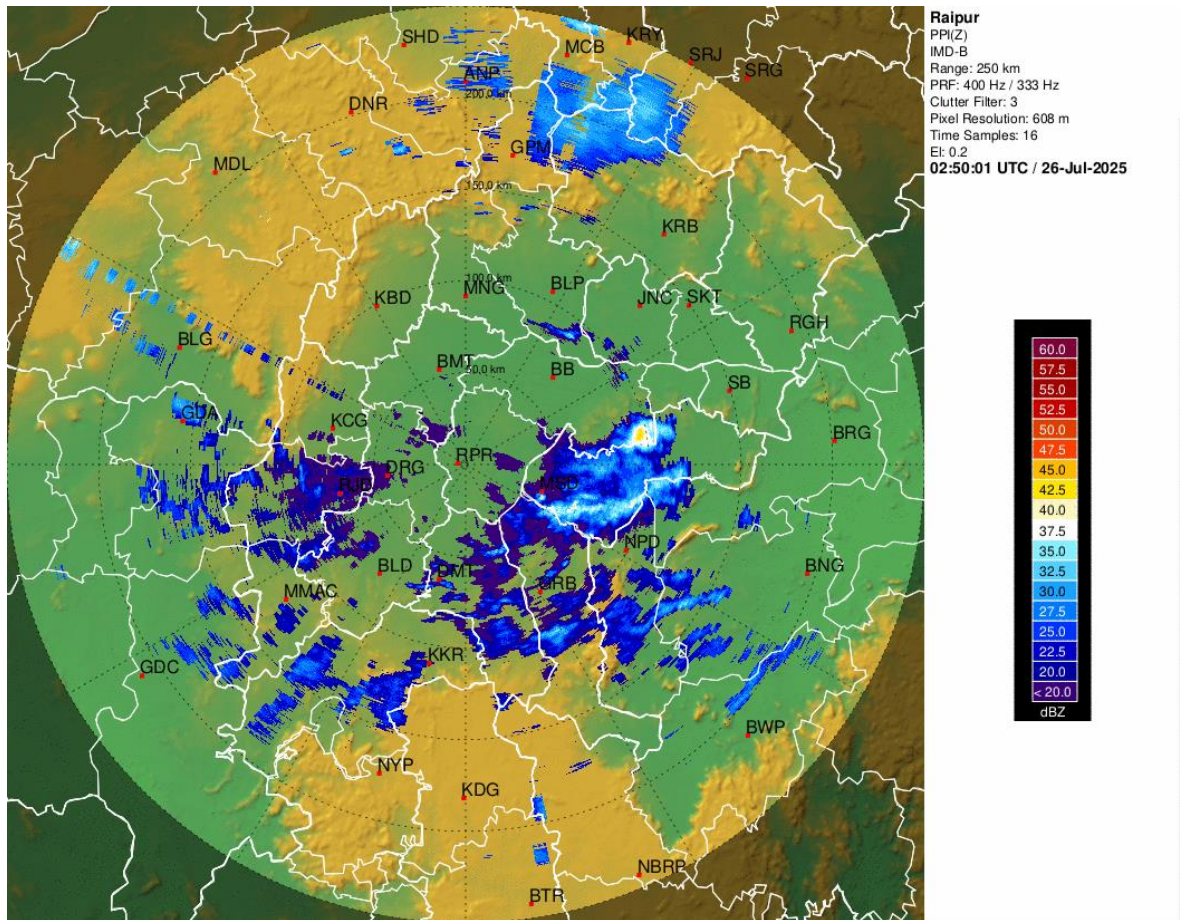
429

897



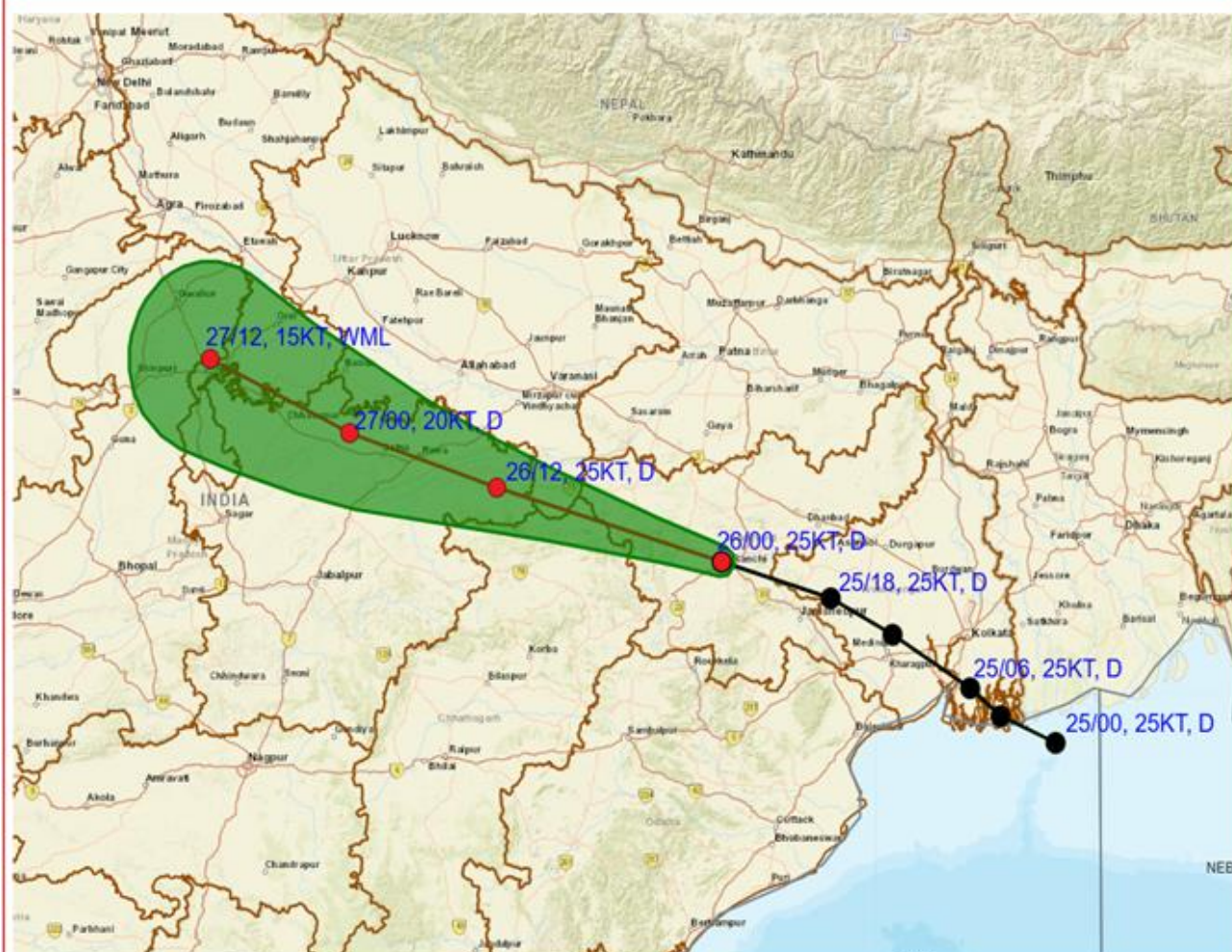


## Maximum reflectivity imagery from Raipur Radar





## OBSERVED AND FORECAST TRACK OF DEPRESSION OVER JHARKHAND AND NEIGHBOURHOOD AT 0530 HRS. IST (0000 UTC) OF 26<sup>th</sup> JULY 2025



DATE/TIME IN UTC

IST=UTC + 0530

1KT=1.85 KMPH

L: LOW PRESSURE AREA

WML: WELL MARKED LOW PRESSURE AREA

D: DEPRESSION (17-27 KT)

DD: DEEP DEPRESSION (28-33 KT)

CS: CYCLONIC STORM (34-47 KT)

SCS: SEVERE CYCLONIC STORM (48-63KT)

VSCS: VERY SEVERE CYCLONIC STORM (64-89 KT)

ESCS: EXTREMELY SEVERE CYCLONIC STORM (90-119 KT)

SuCS: SUPER CYCLONIC STORM (≥ 120 KT)

● LESS THAN 34 KT

○ 34-47 KT

○ ≥ 48 KT

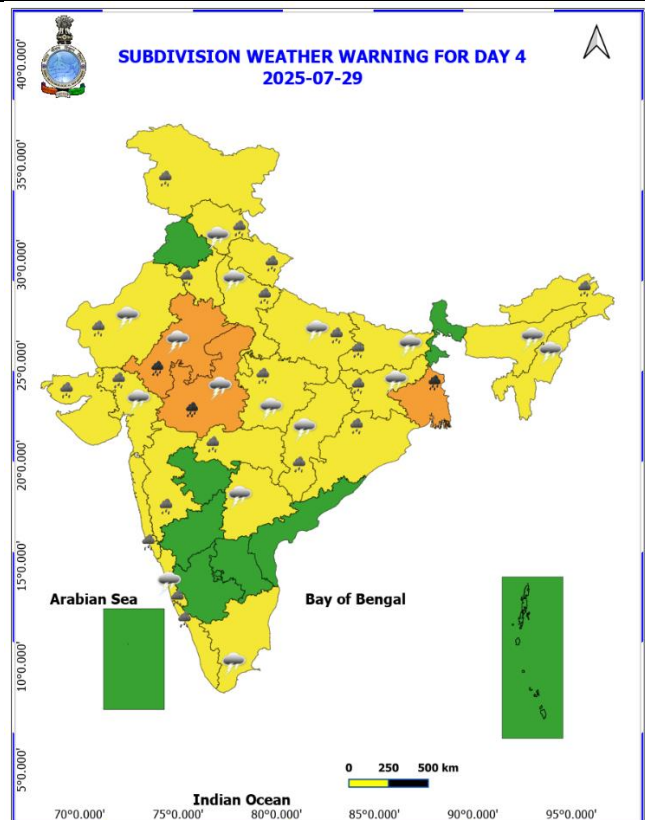
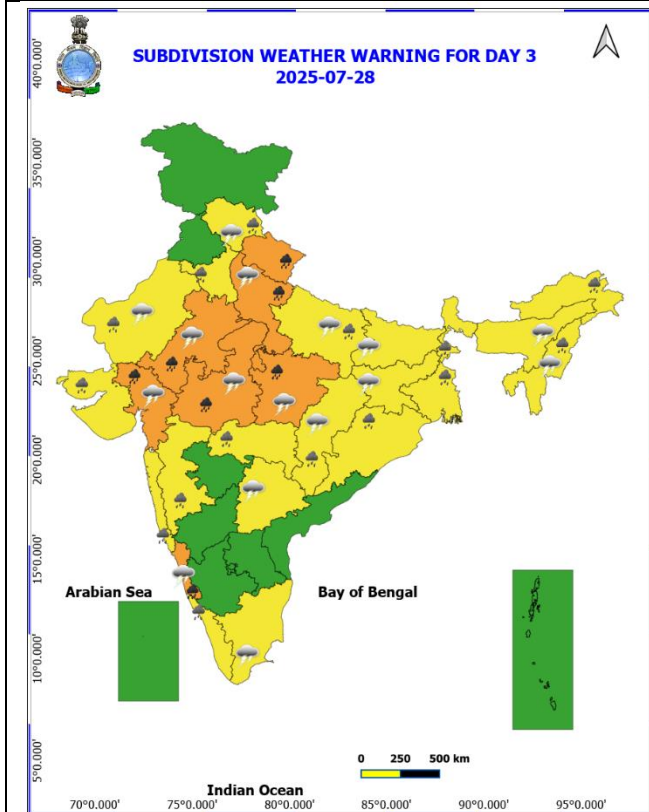
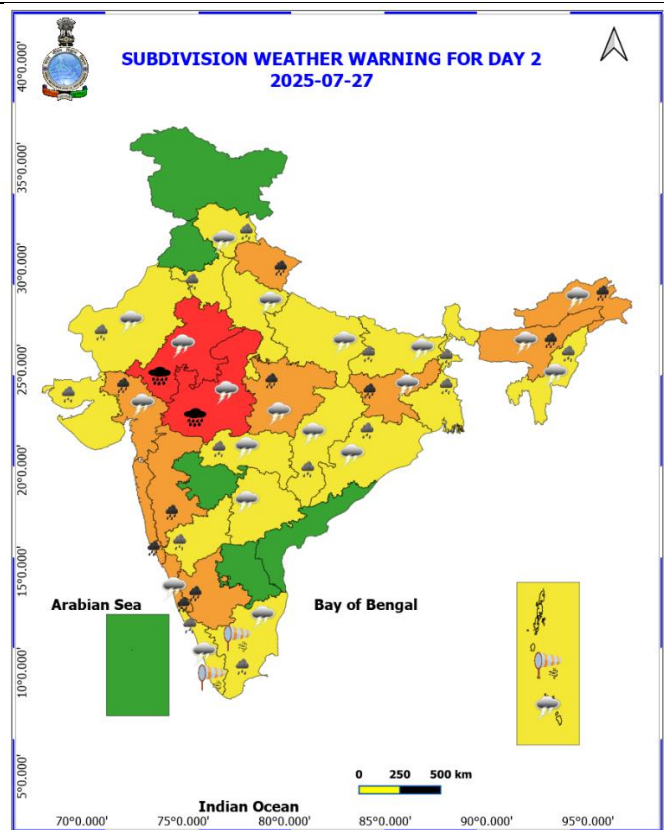
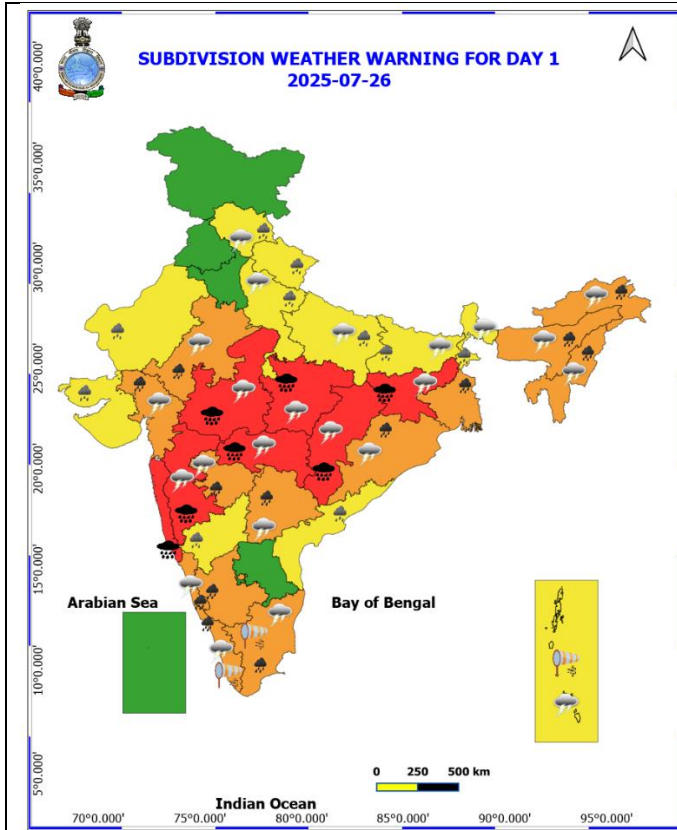
— OBSERVED TRACK

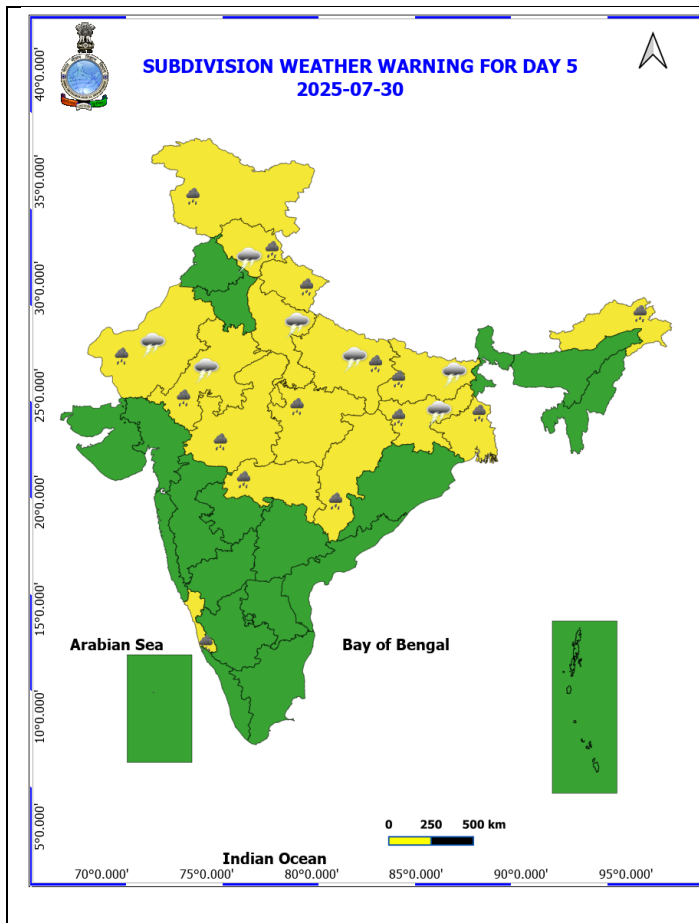
— FORECAST TRACK


▲ CONE OF UNCERTAINTY

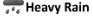



# Weather Warnings Graphics







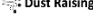
 Fog


 Heavy Rain

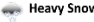
 Very Heavy Rain

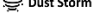
 Extremely Heavy Rain


 Thunder & Lightning


 Hailstorm

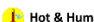
 Dust Raising Winds

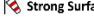
 Heavy Snow


 Dust Storm


 Heat Wave


 Warm Night

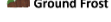
 Hot Day

 Hot & Humid

 Strong Surface Winds

 Cold Wave

 Cold Day

 Ground Frost

**COLOUR CODED WARNING**

**No Warning (No Action)**

**Watch (Be Aware)**

**Alert (Be Prepared To Take Action)**

**Warning (Take Action)**

**Probabilistic Forecast**

Terms	Probability of Occurrence (%)
Unlikely	< 25
Likely	25 - 50
Very Likely	50 - 75
Most Likely	> 75

\* Red colour warning does not mean "Red Alert", Red colour warning means "Take Action".  
Forecast and Warning for any day is valid from 0630 hours IST of day till 0630 hours IST of next day.  
For more details, kindly visit <https://mausam.india.gov.in> or contact: 011-2434-4599  
(Service to the Nation since 1875)



# Flash Flood Guidance

## Persistent Flash Flood Threat

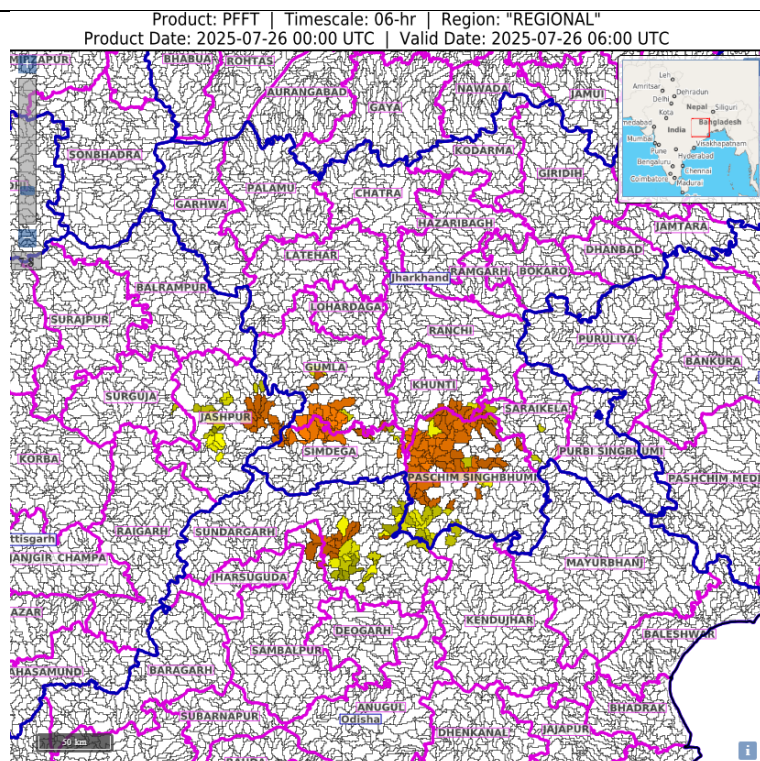
(PFFT) till 1130 IST of 26-07-2025 :

Moderate to High flash flood threat likely over few watersheds & neighbourhoods of following Met Sub-divisions during next 6 hours.

**Chhattisgarh** - Jashpur, districts. Odisha – Sambalpur and Sundergarh districts.

**Jharkhand** – Paschim Singhbhum, Gumla, Khunti, Saraikela and Simdega districts.

Surface runoff/ Inundation may occur at some fully saturated soils & low-lying areas over Area of Concern (AoC) as shown in map due to expected rainfall occurrence in next 6 hours.



## 24 hours Outlook for the Flash Flood Risk (FFR) till 0530 IST of 27-07-2025 :

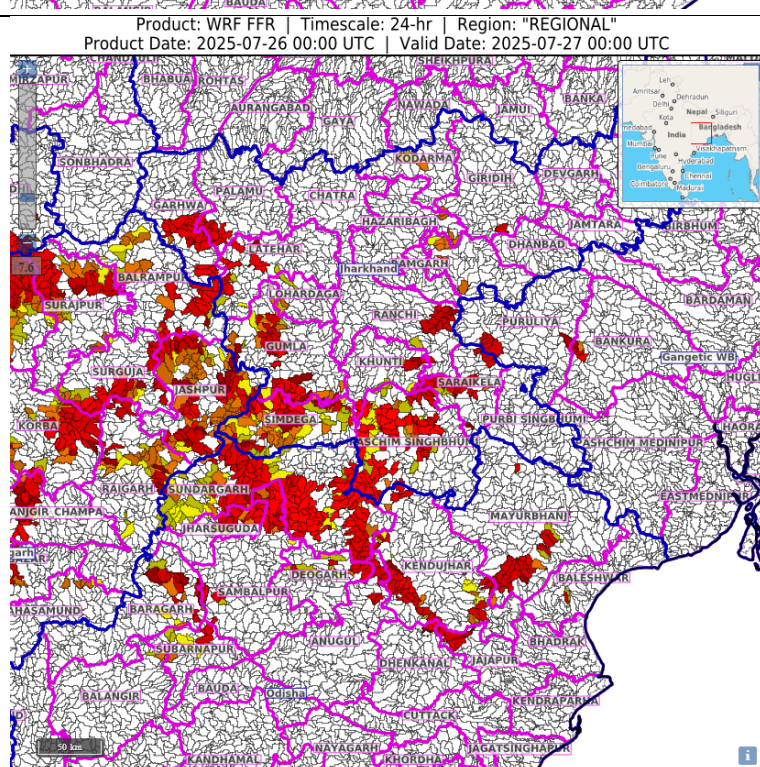
Moderate to High flash flood risk likely over few watersheds & neighbourhoods of following Met Sub-divisions during next 24 hours.

**Odisha** - Baragarh, Deogarh, Jajapur Jharsuguda, Kendujhar, Mayurbhanj, Sambalpur, Subarnapur and Sundargarh districts.

**Gangetic West Bengal** - Bankura, Pashchim Medinipur, Puruliya districts.

**Jharkhand** - East Singhbhum, Garhwa, Gumla, Khunti, Latehar, Lohardaga, Palamu, Ranchi, Saraikela, Simdega and West Singhbhum districts.

Surface runoff/ Inundation may occur at some fully saturated soils & low-lying areas over Area of Concern (AoC) as shown in map due to





expected rainfall occurrence in next 24 hours.

### **24 hours Outlook for the Flash Flood Risk (FFR) till 0530 IST of 27-07-2025 :**

Moderate to High flash flood risk likely over few watersheds & neighbourhoods of following Met Sub-divisions during next 24 hours.

**Chhattisgarh** - Balarampur, Baloda Bazar, Bilaspur, Durg, Janjgir\_Champa, Jashpur, Kawardha, Korba, Korea, Mungeli, Rajnandgaon, Raipur, Raigarh, Surajpur and Surguja districts.

**East Madhya Pradesh** - Anuppur, Balaghat, Chhindwara, Chhatarpur, Damoh, Dindori, Jabalpur, Katni, Mandla, Narshimpura, Niwari, Panna, Rewa, Sagar, Satna, Seoni, Shahdol, Sidhi, Singrauli, Tikamgarh and Umaria districts.

**West Madhya Pradesh** - Ashoknagar, Agar Malwa, Betul, Bhopal, Burhanpur, Dewas, Guna, Harda, Indore, Kandwa, Khargone, Raisen, Rajgarh, Sehore, Shivpuri, Shajapur, Ujjain, Videsha and Hoshangabad districts.

**Vidarbha** – Amarawati, Akola, Bhandara, Chandrapur, Gadchiroli, Gondiya, Nagpur, Yavatmal and Wardha districts.

Surface runoff/ Inundation may occur at some fully saturated soils & low-lying areas over Area of Concern (AoC) as shown in map due to expected rainfall occurrence in next 24 hours.

